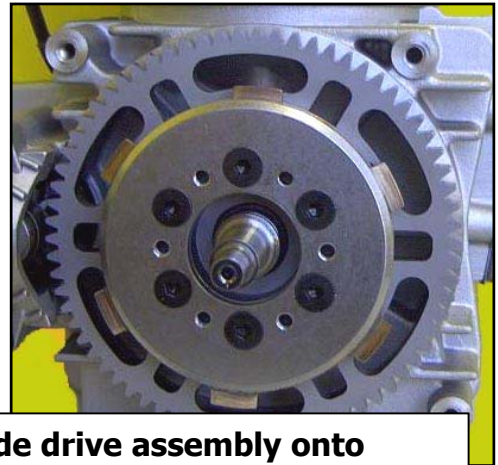


FX-100 Clutch Installation



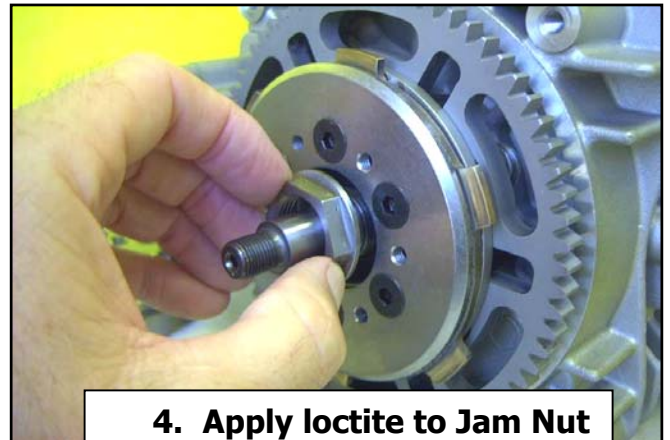
1. Apply loctite to cone area of crankshaft



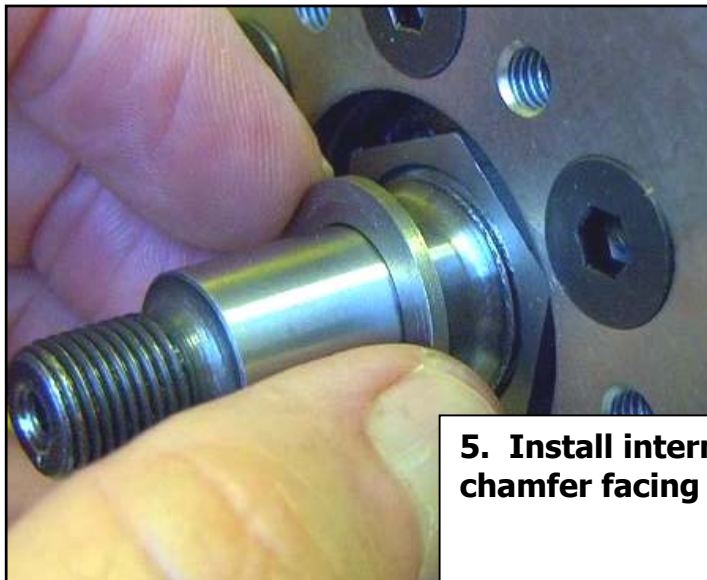
2. Slide drive assembly onto crankshaft



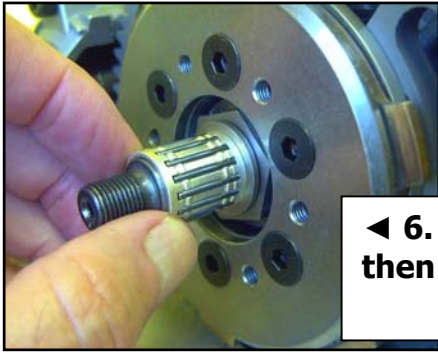
3. Install cone washer



**4. Apply loctite to Jam Nut
Torque setting
76 N•m**



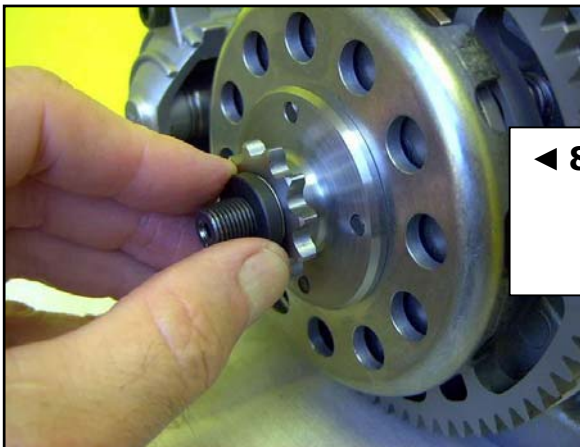
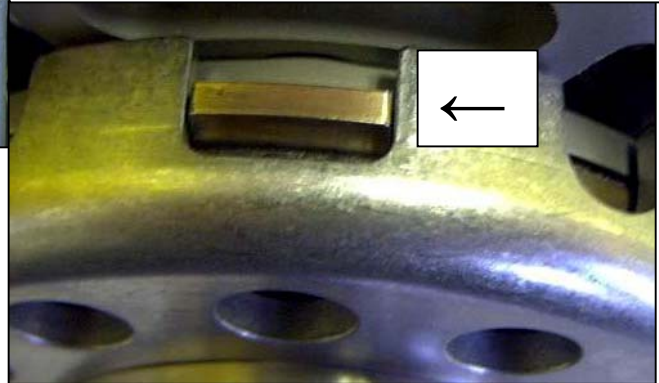
5. Install internal thrust washer with chamfer facing toward engine



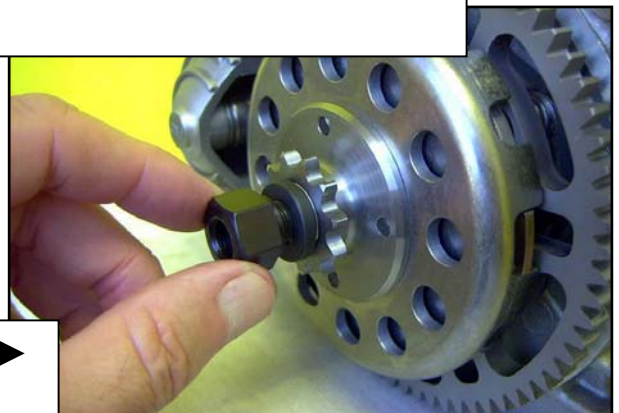
◀ 6. Apply grease to bearing then slide onto crankshaft



◀ 7. Install drum
Warning! The 6 tabs on the friction disc must align with the rectangular slots in the drum. Incorrect alignment will prevent the drum from seating all the way onto the bearing. Arrow below shows correct installation



◀ 8. Install external thrust washer

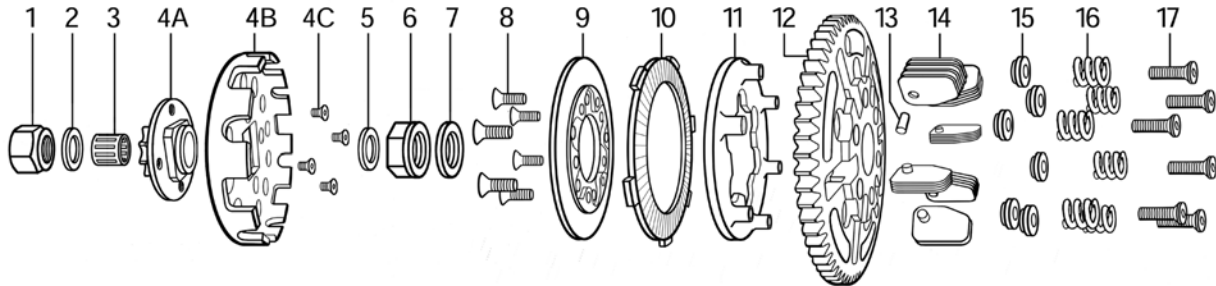


▶ 9. Install nut
Torque to 30 N•m
Apply loctite to threads

If drum does not spin freely the internal thrust washer must be around thinner.

FX-100 CLUTCH MAINTENANCE

Removal from engine



Warning! Always wear eye and hand protective equipment during removal and maintenance of clutch.

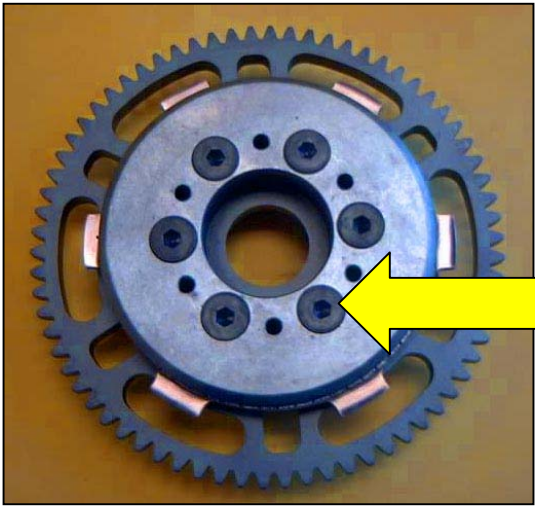
1. Remove nut (item #1)
2. Remove external thrust washer (item #2)
3. Remove drum with sprocket (item #4A & 4B)
4. remove bearing (item #3)
5. remove internal thrust washer (item #5)
6. remove jam nut (item #6)
7. remove conical washer (item #7)

8. Install puller onto face of clutch, tighten six socket head cap screws firmly then tighten the hex head bolt against the end of the crank. Next, take a brass hammer and strike the end of the hex head bolt and the clutch should pop off the crank.



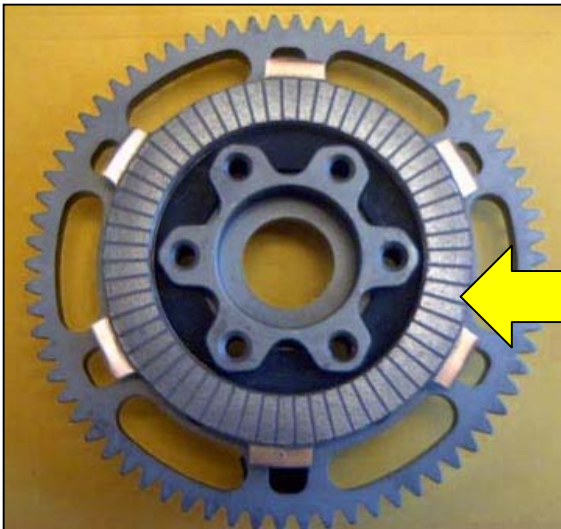
Picture of puller attached to clutch

Disassemble and inspect every 5 hours



1. Remove flat head screws and lift off fixed plate

Inspect for cracks or wear on friction surface and replace if necessary



2. Remove friction disc

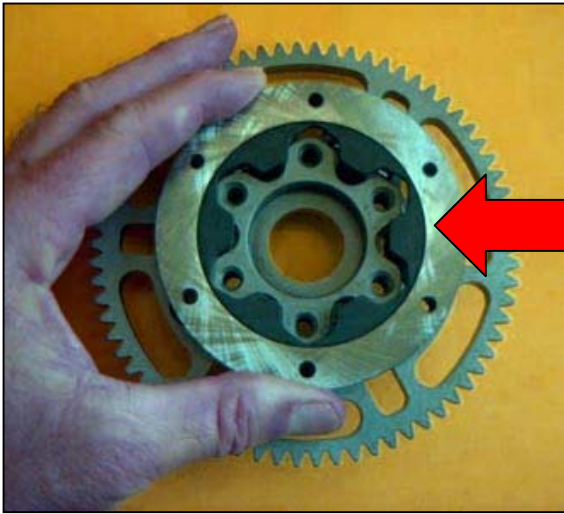
Replace when OAT is below 3.2MM



3. Remove screws, retainers, and springs

Replace broken springs or when free length is below 12.06MM

Note: during reassembly be sure to apply loctite to screws and tighten firmly or they may vibrate loose



4. Remove pressure plate

inspect for wear or cracks and replace if necessary. Lap high spots with 100 grit Emery cloth.



5. Remove levers

inspect levers for wear in pivot hole and replace when hole is oval shaped replace dowel pins every 5 hours or when worn.

Inspect drive hub and crown gear for wear or cracks and replace if necessary

Reassembly Reverse steps 1-5



Important!

When assembling fixed plate apply loctite to flat head screws and tighten to 15 N•m